

Pressure relief valve, pilot operated, sandwich plate type UZPR6

NS 6 | p_{max} 35 MPa | Q_{max} 60 dm³/min | WK 433 390



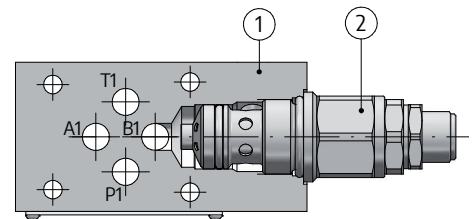
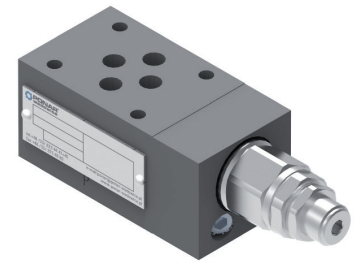
DATA SHEET - OPERATION MANUAL

APPLICATION

The pressure relief valve, pilot operated, sandwich plate design type UZPR6... is used to limit pressure in hydraulic systems. The valve is suitable for sandwich plate mounting in any working position.

OPERATION DESCRIPTION

The pressure relief valve type UZPR6... consists of the housing **1** and a cartridge relief valve **2**; proper combination of connection lines in the housing **1** makes it possible to obtain combinations shown on the hydraulic diagrams below, depending on the version of the valve.



TECHNICAL PARAMETERS

hydraulic fluid	mineral oil
required cleanliness class of oil	ISO 4406 class 20/18/15
nominal fluid viscosity	37 mm ² /s at temp. 55 °C
viscosity range	2,8 ÷ 380 mm ² /s
temperature range of fluid (in tank)	max. -20 ÷ 70 °C; recommended 40 ÷ 55 °C
ambient temperature range	-20 ÷ 70 °C
max. working pressure	35 MPa
settable pressure ranges	1,5 ÷ 6 / 2,5 ÷ 13,5 / 5 ÷ 22 / 12 ÷ 35 MPa
maximum settable pressure	35 MPa
maximum flow	60 dm ³ /min
weight	versions: ...ABBA...; ...ATBT... - 1,9 kg versions: ...PT...; ...AT...; ...BT... - 1,4 kg

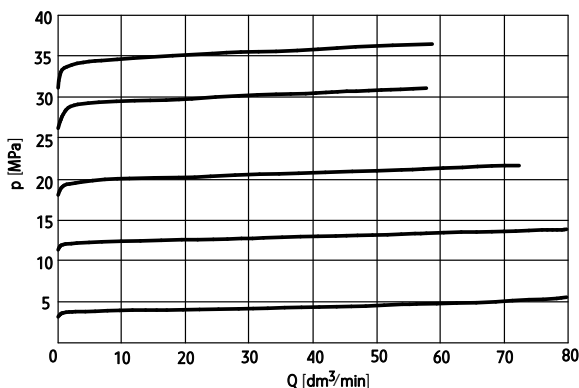
assembly and operation requirements at www.operating-conditions.ponar.pl

PERFORMANCE CURVES

measured at viscosity $\nu = 41$ mm²/s and temperature $t = 50$ °C

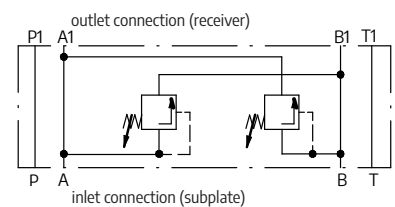
Flow resistance curves

chart showing relation of the working pressure p to the flow Q for different pressure settings

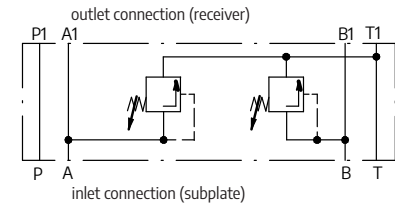


HYDRAULIC DIAGRAMS

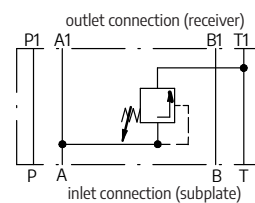
version UZPR6...ABBA...



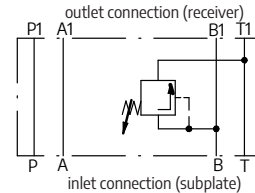
version UZPR6...ATBT...



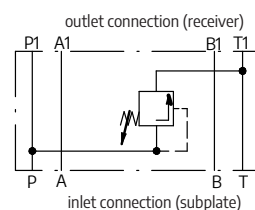
version UZPR6...AT...



version UZPR6...BT...

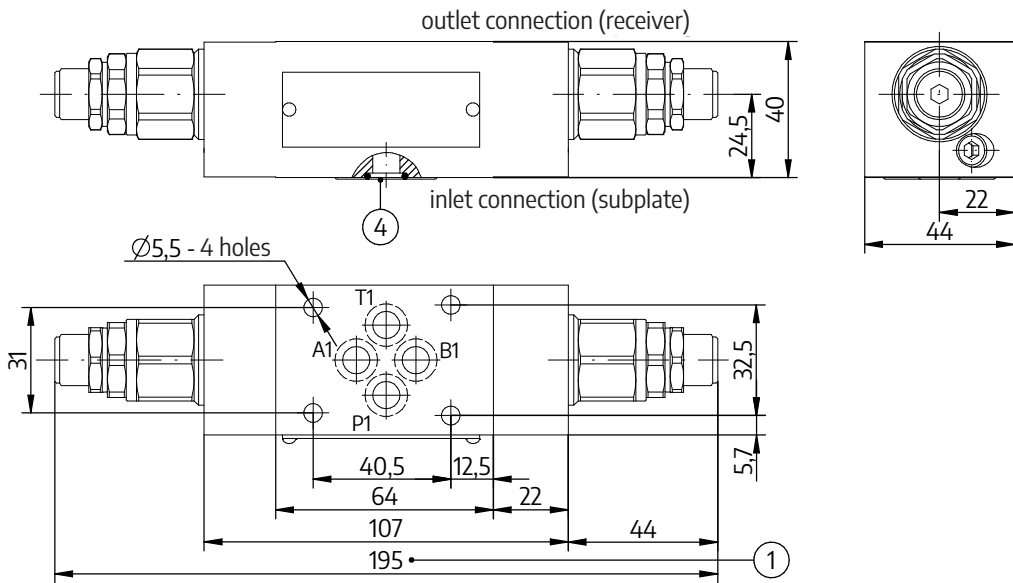


version UZPR6...PT...

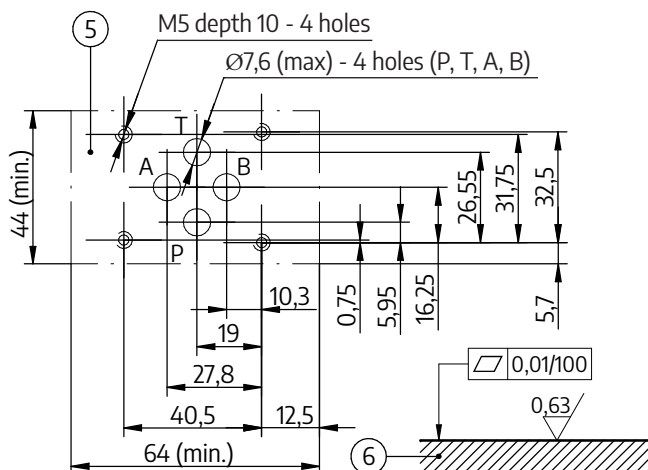
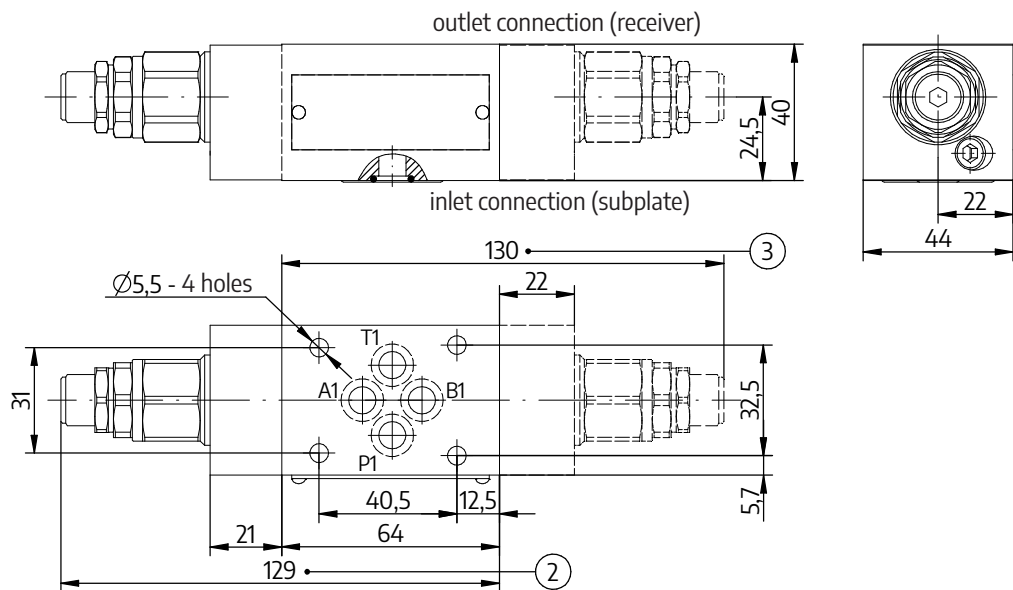


OVERALL AND CONNECTION DIMENSIONS

version: UZPR6...ABBA...; ...ATBT...



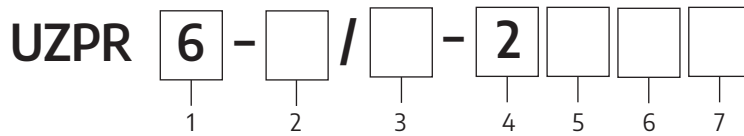
version: UZPR6...AT...; ...BT...; ...PT...



1. Dimension of valve versions: UZPR6...ABBA...; ...ATBT...
2. Dimension of valve version: UZPR6...AT...
3. Dimension of valve versions: UZPR6...PT...; ...BT...
4. Seal o-ring 9,2 x 1,8 - pcs. 4/set (P, T, A, B)
5. Porting pattern for directional spool valve - configuration of connection holes compliant with ISO 4401 - designation ISO 4401-03-02-0-94 (CETOP 03) fixing screws M5 x L* - 10.9 - pcs. 4/set in accordance with PN - EN ISO 4762; tightening torque $M_d = 9 \text{ Nm}$
6. Subplate surface required

NOTE:
(*) - Required length of the screws L depends on the type and number of sandwich-mounted hydraulic elements.

HOW TO ORDER



1 Nominal size (NS)

NS6 = 6

2 Serial number

(40÷49) - connection and installation dimensions unchanged = 4X
series 42= 42

3 Settable pressure range

1,5 ÷ 6 MPa = 50
 2,5 ÷ 13,5 MPa = 100
 5 ÷ 22 MPa = 200
 12 ÷ 35 MPa = 350

4 Adjustment element

screw with a hexagon head = 2

5 Relief function for flow direction

(see the hydraulic diagrams on page 1)
 from A to T = AT
 from B to T = BT
from P to T = PT
 from A to T and from B to T = ATBT
 from A to B and from B to A = ABBA

6 Sealing

NBR (for fluids based on mineral oil) = ∅

FKM (for fluids on phosphate ester base) = V

7 Further requirements = *

(to be agreed with the manufacturer)

∅ indicates that the box should be left blank

The **symbols in bold are** the preferred versions available in short delivery time.

SUBPLATES AND FIXING SCREWS

Subplates must be ordered according to data sheet WK 496 480.

Subplate symbols:

G341/01 – threaded connections G¹/₄

G342/01 – threaded connections G³/₈

G502/01 – threaded connections G¹/₂

Subplates and screws fixing the relief valve M5 x L* - 10,9 compliant with PN - EN ISO 4762 (PN/M - 82302) - 4 pcs./set delivered on separate order. Tightening torque Md = 9 Nm.

CONTACT

PONAR Wadowice S.A.
ul. Wojska Polskiego 29
34-100 Wadowice

phone +48 33 488 21 00
www.ponar-wadowice.pl