

Hydraulic accumulator cut-off and protection unit type UZAE 10

NS 10 | p_{max} 36 MPa | WK 493 120

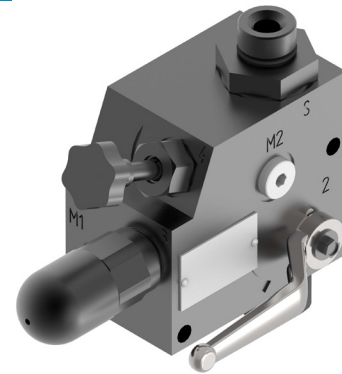


DATA SHEET - OPERATION MANUAL

APPLICATION

Hydraulic accumulator protection and cut-off unit type **UZAE 10** is used for connecting hydraulic accumulator to the system while meeting safety requirements.

The product is compliant with the regulations of directive **214/35/UE**.



DESCRIPTION OF OPERATION

The unit consists of a housing incorporating the following subunits:

- ball cut-off valve for connecting and disconnecting the accumulator with the hydraulic system
- manual relief valve for safe unloading of accumulator after cut-off
- safety valve for system protection - with CE approval; if a unit with CE approval valve is ordered, it is set to required pressure and sealed
- electrically operated directional control valve that enables electrical unloading of the accumulator (if a version with directional valve is chosen)
- threaded flange that enables connection of the unit with the accumulator (standard flanges enable connection of EPE Italiana accumulators)

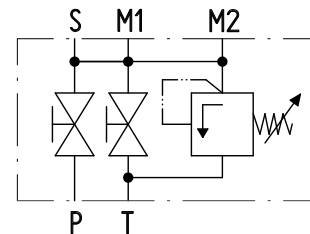
TECHNICAL PARAMETERS

hydraulic fluid	mineral oil	
required fluid cleanliness class	ISO 4406 class 20/18/15	
nominal fluid viscosity	37 mm ² /s at temperature 55 °C	
viscosity range	2,8 ÷ 380 mm ² /s	
fluid temperature range (in a tank)	recommended	40 ÷ 55 °C
	max.	-20 ÷ 70 °C
ambient temperature range	without solenoid	-20 ÷ 70 °C
	with solenoid	-20 ÷ 50 °C
maximum operating pressure	36 MPa	
housing material	steel	
type of relief valve	DBDS6K... as in data sheet WK 450 610	
type of solenoid valve	2URED6C1... as in data sheet WK 493 130	
solenoid valve voltage	12V DC; 24V DC lub 230V 50Hz	
power consumption	26 W	
weight	5,3 kg	

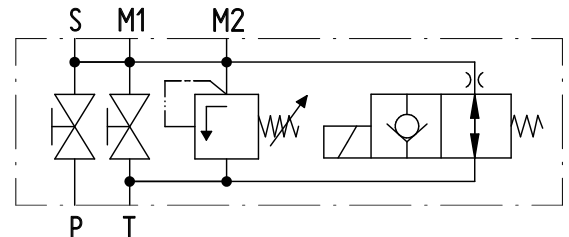
assembly and operation requirements at www.operating-conditions.ponar.pl

DIAGRAMS

version with manual unloading



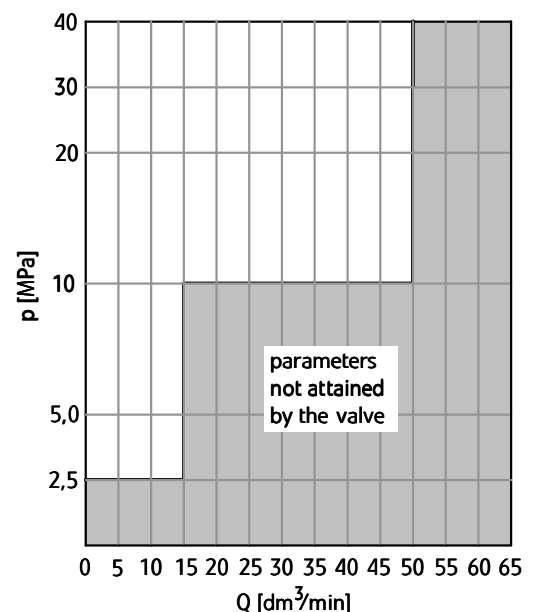
version with manual and electrical unloading



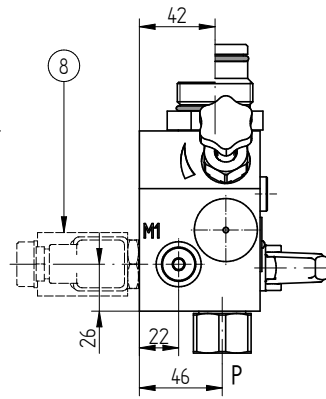
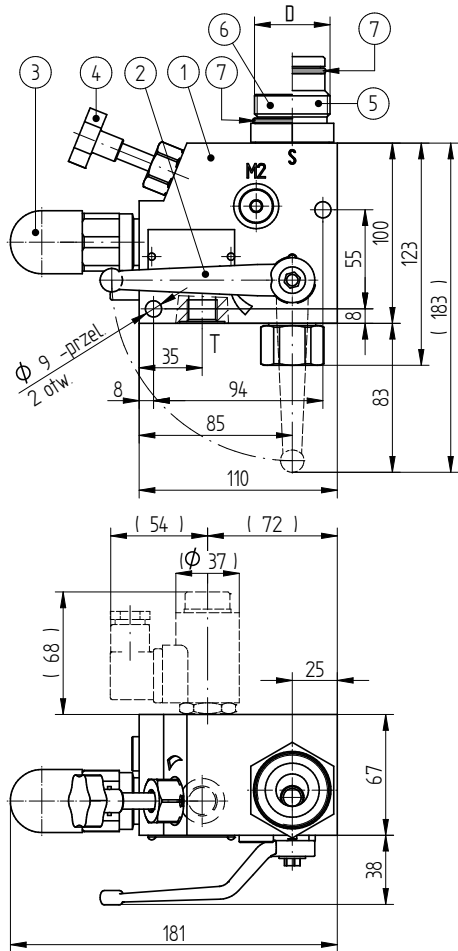
PERFORMANCE CURVES

measured at viscosity $\nu = 41 \text{ mm}^2/\text{s}$ and temperature $t = 50 \text{ }^\circ\text{C}$

version **DBDS6K...** as safety valve with CE approval



OVERALL AND CONNECTION DIMENSIONS



1. Unit
2. Accumulator cut-off valve
3. Safety valve
4. Manual relief valve
5. Accumulator connection Hydac (H)
6. Accumulator connection Eppensteiner (E)
7. Sealing ring
8. Electrically operated unloading valve

Connection dimensions:

- M1; M2** - G1/4 - pressure gauge connections
P - G1/2 - pump connection
T - G3/8 - tank connection
S (D) - accumulator connection:
 for Eppensteiner accumulators (**E**):
G1/2; G3/4; G1 1/4; G2
 for Hydac accumulators (**H**):
G3/4; G1; G1 1/4

HOW TO ORDER

UZAE10 / 13 - -

1 2 3 4 5 6 7

1 series number

(10 ÷ 19) installation and connection dimensions unchanged = 1X
 series 13 = 13

2 unloading method

manual = ∅
 manual and electrical = R

3 control voltage for solenoids

12V DC = G12
 24V DC = G24
 230V AC 50 Hz = W230R

4 safety valve approval

no approval = ∅
 with CE approval = C

5 safety valve setting

do 2,5 MPa = 25
 do 5 MPa = 50
 do 10 MPa = 100
 do 20 MPa = 200
 do 31,5 MPa = 315
 do 33 MPa = 330
 do 36 MPa = 360

for valves with CE approval specify pressure setting (factory setting and sealing) **every 5 bar**

6 accumulator connections

for Eppensteiner accumulators:

G 1/2 = E1
 G 3/4 = E2
 G 1 1/4 = E3
 G 2 = E4

for Hydac accumulators:

G 3/4 = H1
 G 1 = H2
 G 1 1/4 = H3

7 further requirements = *

(to be agreed with the manufacturer)

∅ indicates that the box should be left blank.

The **symbols in bold** are the preferred versions available in short delivery time.

Coding example: **UZAE10/13 - C 275 E2**

KONTAKT

PONAR Wadowice S.A.
 ul. Wojska Polskiego 29
 34-100 Wadowice

tel. +48 33 488 21 00
 www.ponar-wadowice.pl