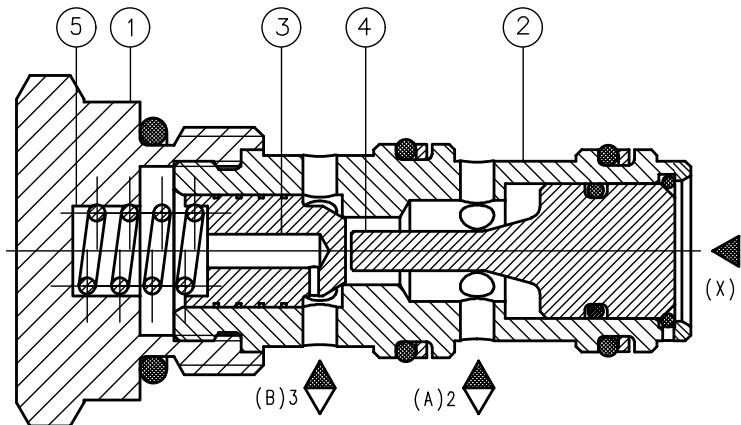


APPLICATION

Pilot check valves allow fluid to pass in one direction with low pressure drop, then prevent reverse flow until pilot pressure is applied.

There are many applications for this valve type, the most common being to lock and hold a cylinder or other hydraulic actuator in position.



DESCRIPTION OF OPERATION

Pressure at the valve port (A) causes the poppet (3) to lift against the spring force (5) allowing flow to the cylinder port (B). Reverse flow is prevented by the check reseating.

Reverse flow is prevented by the check reseating.

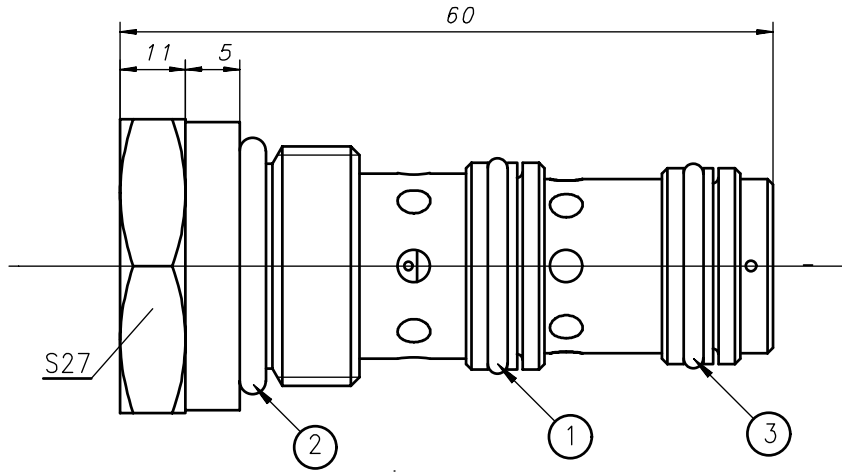
Pressure applied to the pilot port (X) will overcome the cylinder port pressure (B) and lift the piston (4) and poppet from its seat in sleeve (2) allowing return flow.

Return flow is possible as long as the pressure is active at the pilot port (X).

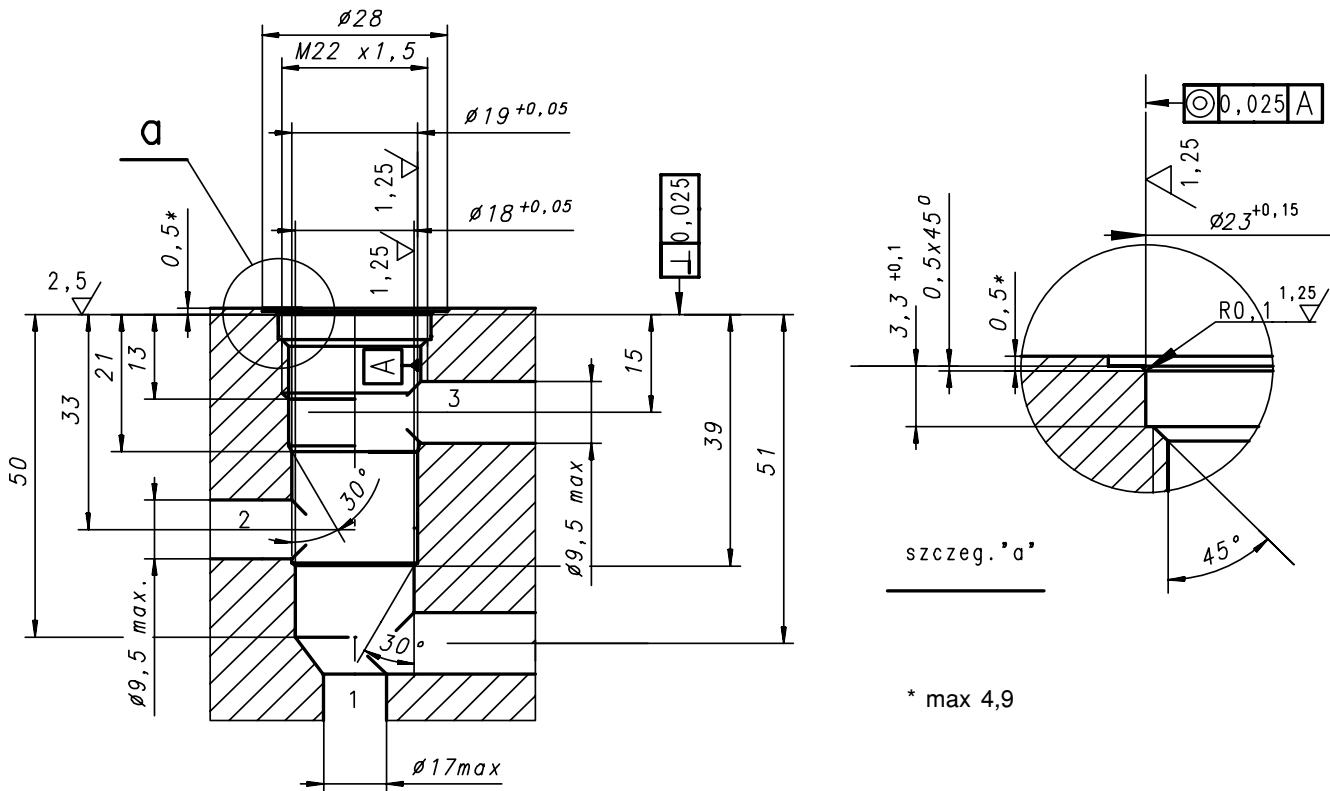
TECHNICAL DATA

Working fluid	Mineral oil
Nominal fluid viscosity	37 mm ² /s at temperature 55 °C
Viscosity range	2,8 up to 380 mm ² /s
Optimum working temperature range	40 °C up to 55 °C
Fluid temperature range	-20 °C up to +70 °C
Required fluid filtration	16 μm
Recommended fluid filtration	10 μm
Max working pressure	31,5 MPa
Cracking pressure	0,5 MPa
Area ratio (valv surface/piston surface)	1 : 3
Weight	~ 0,1 kg

OVERALL AND CONNECTION DIMENSIONS

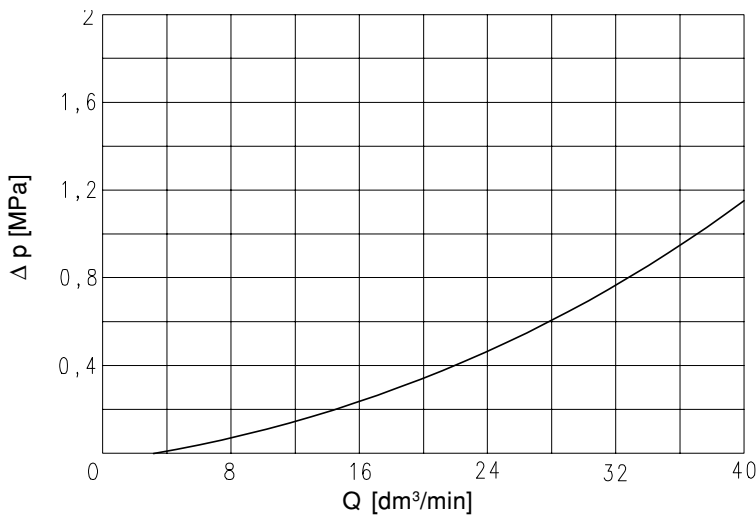


pos.1 "O-ring" 15,6 x 1,78
 pos.2 "O-ring" 18 x 2,65
 pos.3 "O-ring" 15 x 1,8



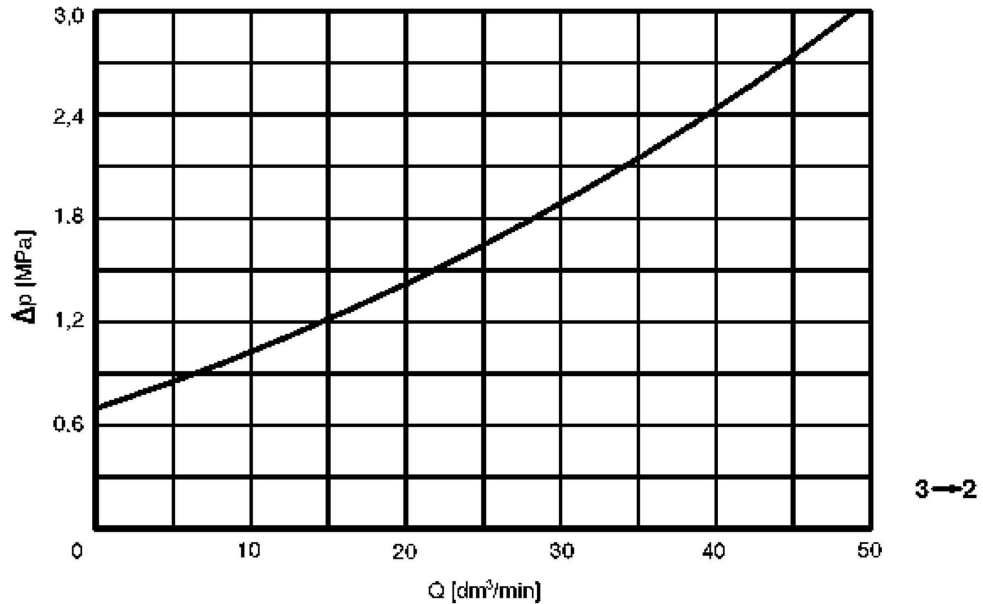
Dimensions of cavity
 Tightening torque of cartridge valve - 80Nm
 Mounting position-unrestricted

PERFORMANCE CURVES measured at viscosity $\nu = 41 \text{ mm}^2/\text{s}$ and temperature $t = 50^\circ\text{C}$

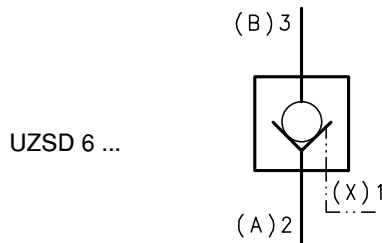


2 → 3

PERFORMANCE CURVES measured at viscosity $\nu = 41 \text{ mm}^2/\text{s}$ and temperature $t = 50 \text{ }^\circ\text{C}$



SYMBOL



HOW TO ORDER

Orders coded in the way showed below should be forwarded to the manufacturer

UZSD 6	/ 5 - M 1	*
---------------	------------------	----------

<p>Series number (10-19) - connection and installation dimensions unchanged series 12</p>	<p>= 1X = 12</p>
<p>Cracking pressure 0,5 MPa</p>	<p>= 5</p>
<p>Kind of cavity Cavity M22x1,5</p>	<p>= M1</p>
<p>Sealing NBR (for fluids on mineral oil base) FKM (for fluids on phosphate ester base)</p>	<p>= no designation = V</p>
<p>Further requirements to be added in text (to agree with the manufacturer)</p>	

NOTE:
The symbols in bold are preferred versions in short delivery time.
Coding example: UZSD6 12/5 - M1

PONAR WADOWICE S.A.
ul. Wojska Polskiego 29
34-100 Wadowice
tel. 033/ 823 39 43, 823 30 41
fax 033/ 873 48 80
e-mail: ponar@ponar-wadowice.pl

