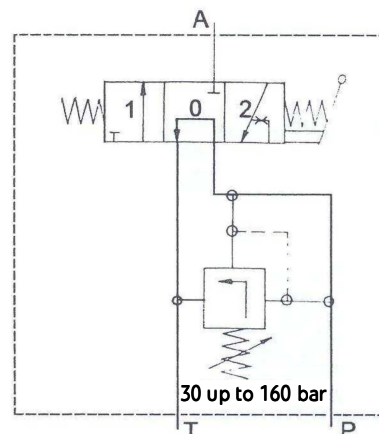


TECHNICAL DATA

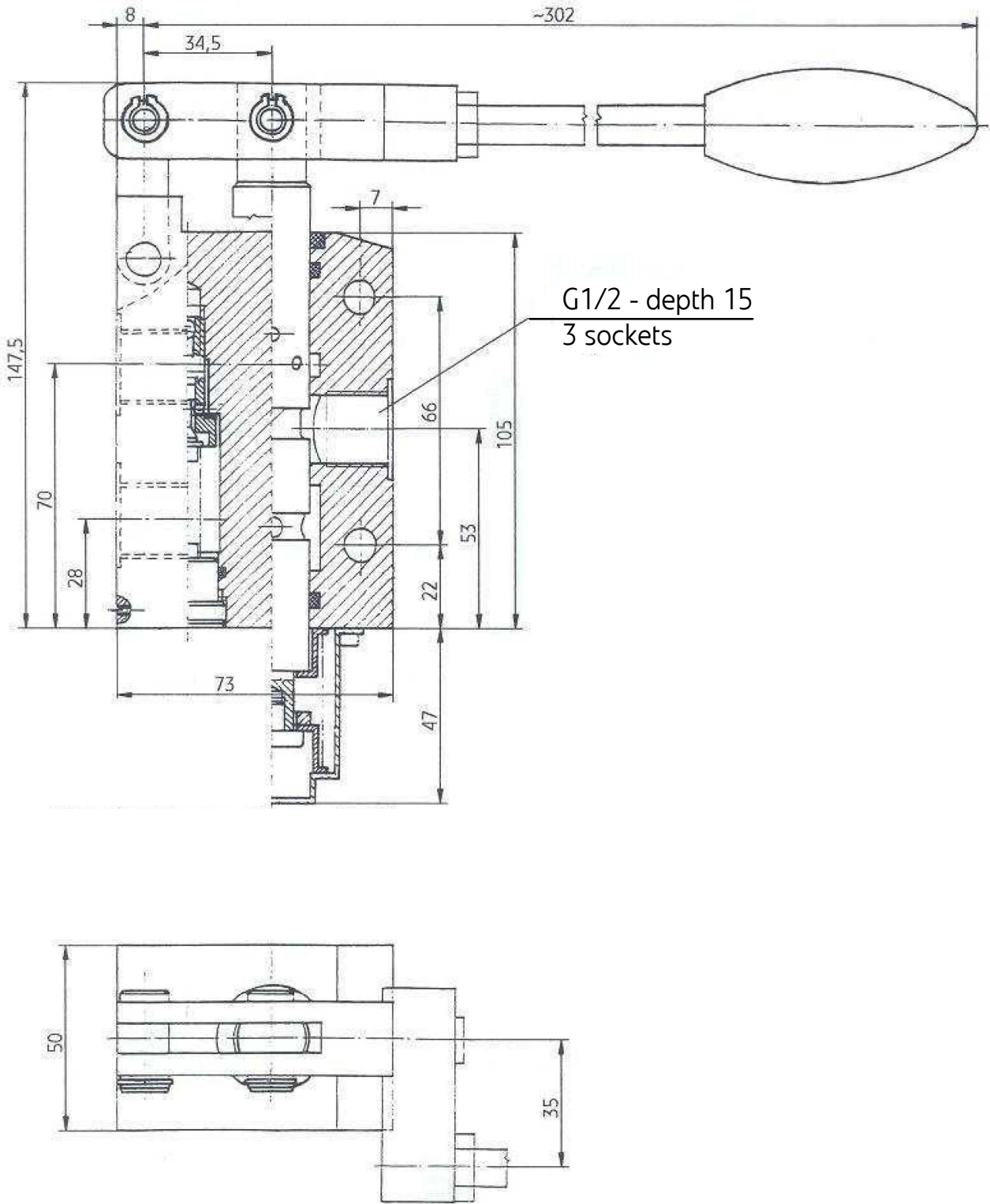
| | | |
|-----------------------------|--|----------------|
| Hydraulic fluid | mineral oil | |
| Required filtration | up to 16 μm | |
| Recommended filtration | up to 10 μm | |
| Nominal fluid viscosity | 37 mm ² /s at temperature 55 °C | |
| Viscosity range | 2,8 up to 380 mm ² /s | |
| Optimum working temperature | 40 °C up to 55 °C | |
| Temperature range | -30 °C up to +70 °C | |
| Nominal pressure | version 3URRE13-00/90 | 90 bar |
| | version 3URRE13-00/150 | 150 bar |
| Maximum flow | 80 dm³/min | |

SCHEMES

Hydraulic diagram of the valve type 3URRE13...



OVERALL AND CONNECTION DIMENSIONS



HOW TO ORDER

| | | | | |
|--------------|-----------|----------|----------|----------|
| 3URRE | 13 | + | / | * |
|--------------|-----------|----------|----------|----------|

Nominal size (NS)

NS13

= 13

Series number

(00-09) - connection and installation dimensions unchanged = 0X

series 00

= 00

Pressure range at the overflow valve

up to 90 bar

= 90

up to 150 bar

= 150

Further requirements in clear text (to be agreed with the manufacturer)

NOTES:

Directional valve should be ordered according to the above coding.

Coding example: 3 URRE 13 – 00/150

PONAR Wadowice S.A.
ul. Wojska Polskiego 29
34-100 Wadowice
tel. +48 33 823 44 41 - 45
fax. +48 33 823 41 69
www.ponar-wadowice.pl

